



TK Motion Manager UserGuide

TK10-0003 rel Feb 2011

Contents

1	Welcome	6
2	Quick Start	7
3	System Overview	9
3.1	Movement Monitors	9
3.1.1	The SXT	9
3.1.2	The WXT	10
3.1.3	The DWT	10
3.2	Docking Station	11
3.3	Access Point	11
3.4	Recording Modes	11
3.4.1	Robust Synchronized Streaming	11
3.4.2	Rapid Synchronized Streaming	12
3.4.3	Synchronized Logging	12
3.4.4	Low Power Logging	12
3.5	TK Motion Manager	12
3.6	NexGen Software Development Kit	12
4	Downloading TK Motion Manager	13
5	Installing TK Motion Manager	14
5.1	Macintosh OSX (x32/x64)	14
5.2	Windows	14
5.2.1	Windows XP	14
5.3	Linux (x32/x64)	14
6	TK Motion Manager	16
7	Configuration	17
7.1	Automatic Firmware Updates	18
7.2	System Configuration	18
7.2.1	Attached Hardware	18
7.2.2	Rescan Hardware	18
7.2.3	Record Mode	18
7.3	Wireless Channel	18
7.4	Monitor Configuration	19
7.4.1	Sensors	19

7.4.2	Accelerometer Range	20
7.4.3	Power	20
7.4.4	Monitor Label	20
7.4.5	Monitor Data (SD Card)	20
7.4.6	Calibration	21
7.4.7	Debug	21
7.5	When you are done configuring your system	21
7.6	Re-configuration	21
8	Synchronized Streaming Modes	22
8.1	Starting a Streaming Session	22
8.2	Real Time Chart	23
8.3	Record Duration	23
8.4	Save Options	23
8.4.1	File Format	23
8.4.2	File Name	23
8.4.3	Prepend Date	23
8.5	Statistics	24
8.5.1	Latency	24
8.5.2	Dropped Samples	24
8.6	Starting and stopping	24
9	Synchronized Logging Mode	24
9.1	To start recording	24
9.2	To import recorded data	25
10	Low Power Logging Mode	25
10.1	To start recording	25
10.2	To import recorded data	25
11	Import Manager	26
11.0.1	Selecting Data For Import	26
11.0.2	Conversion Options	27
11.0.3	File Naming Options	27
11.0.4	Import Options	27
11.0.5	After Import	28
12	Managing Your Data	29
12.1	The Data Explorer	29
12.1.1	Working Directory	29

12.1.2 Creating new projects	29
12.1.3 Creating new folders in projects	30
12.2 Plotting	31
13 Working with HDF5 Files	32
13.1 HDFView	32
13.2 Data Organization	32
13.3 File Structure	32
13.3.1 Version 2	32
13.3.2 Version 1	33
13.4 Working with HDF 5 in MATLAB	34
13.5 Examples	35
13.6 Notes	36
14 Powering Your Monitors On and Off	37
14.1 Docking Monitors	37
14.2 Power Off	37
14.3 Power On	37
15 Firmware Updates	38
15.1 Automatic Firmware Updates	38
15.2 Manual Firmware Updates	38
15.2.1 Flash Default Firmware	38
15.2.2 Flash Alternate Firmware	39
15.2.3 Force Update	39
16 Calibration	40
16.1 Factory Calibration	40
16.1.1 Updating Factory Calibration	40
16.2 User Calibration	40
16.2.1 Magnetometer Recalibration	40
16.2.2 Accelerometer Recalibration	40
16.2.3 Gyroscope Recalibration	41
16.3 Clearing User Calibration	41
17 Monitor Reference	42
17.1 Charging	42
17.2 Powering Down	42
17.3 Data Storage	42
17.4 Cleaning	42

17.5 Storage	43
17.6 Drivers	43
17.7 Firmware Updates	43
17.8 Technical Specifications	43
17.9 LED Reference	44
17.9.1 Status Codes and LED Colors/Patterns	44
17.9.2 Movement Monitor LED Reference	44
18 Access Point Reference	46
18.1 Drivers	46
18.2 Firmware Updates	46
18.3 Mounting and Placement	46
18.4 Single vs. Dual	46
18.5 LED Reference	46
19 Docking Station Reference	48
19.1 Drivers	48
19.2 Power	48
19.3 LED Reference	48
20 Limited Warranty	50
21 Troubleshooting	52



1 Welcome

Congratulations on your purchase! NexGen movement monitors are the most advanced in the world, and provide a complete feature set in a small, attractive, and unobtrusive package.

TK Motion Manager provides an easy to use software interface to our movement monitors and supporting hardware, and will enable you to:

- Configure your monitor's settings and features
- Use your hardware for synchronized, wireless streaming of data (SXTs only)
- Use your hardware for synchronized logging of data (SXTs and WXTs only)
- Use your hardware for long duration, non-synchronized logging of data (SXTs, WXTs, and DWTs)
- Recalibrate you monitors
- Organize and view your recorded data
- Keep your hardware up-to-date with firmware updates

2 Quick Start

The following steps are required to get up and running:

1. Turn on your computer and wait for it to boot up.
2. Download TK Motion Manager. See the [Downloading TK Motion Manager](#) section of this document for details.
3. Install TK Motion Manager. See the [Installing TK Motion Manager](#) section of this document for details.
4. Plug the access point(s) into your computer.



5. If multiple docking stations are chained together, you must plug the external power adapter into the docking station. You should see the the lights on each docking station turn yellow when power is applied.
6. Grab a USB cable with a micro (small, flat) connector and plug it into your docking station. If you are using a USB hub, make sure that it is a USB 2.0 High Speed hub and that it has external power. The LEDs on the docking station(s) should turn to solid green when they are recognized by the computer. See special notes in [Installing TK Motion Manager](#) if running Windows XP.



7. Dock the movement monitors into their docking stations. You should see the light on the monitors turn dark blue.



8. Open TK Motion Manager, and click on the “Configure” button. Choose your desired recording mode, and click “Finish”.
9. Undock the monitors.
10. Wireless streaming mode
 - a) After about 5-15 seconds, you’ll notice that the LED’s on the monitors will blink green in unison, and that the access point will have a blinking green LED, indicating that it is receiving data from the monitors.
 - b) Press the “Stream” button in the toolbar. You can view live data streaming in the real-time chart.
 - c) Press the “Record” button to start recording data.
11. Logging modes
 - a) Undock the monitors from their docking stations. They will start recording within several seconds. If using the synchronized logging mode, the LEDs on the monitors will blink in unison.
 - b) When you are done recording, dock the monitors, and press the “Import Data” button in the toolbar to retrieve the data from the monitors. See [“Import Manager”](#) section of this document for details.



3 System Overview

The NexGen movement monitoring system allows the user to record data from multiple monitors; each integrating a suite of sensors. The system can be configured in 3 recording modes allowing for a wide range of applications. Some movement monitors are limited to a subset of these modes allowing for a lower cost solution. The modes of operation are robust synchronized streaming, rapid synchronized streaming, synchronized logging, and low power logging. Regardless of the mode the movement monitor always will record data to its local memory card which can be imported from the monitor for offline analysis.

3.1 Movement Monitors

Movement monitors are the key element of the system and combine a complement of sensors within a single package. Sensors include a 3 axis accelerometer, a 3 axis gyro, a 3 axis magnetometer, and a temperature sensor. The accelerometers can be configured in a high 6G mode, or a low 2G mode depending on the target application. There are a number of options for securing the monitors on subjects using a selection of straps.

3.1.1 The SXT

The SXT is NexGen's full featured movement monitor allowing for use of all 4 recording modes.



The SXT movement monitor

3.1.2 The WXT

The WXT is an option that supports the synchronized and low power logging modes, but does not support the streaming modes. These monitors are optimized for long duration recordings or recordings where it is not desirable to have a computer at hand to collect streaming data.

3.1.3 The DWT

The DWT only supports the low power logging mode. This version of the movement monitor has no wireless capabilities and may be the optimal choice for RF sensitive environments or where a single movement monitor is needed without synchronization.



The docking station, for charging, configuring, and downloading data from your movement monitors

3.2 Docking Station

The docking station is used to configure, charge, and download data from the movement monitors.

3.3 Access Point

The wireless access control point (access point for short) allows for wireless communication between the host computer and SXT movement monitors. A single access point can support up to 6 SXTs.



The access point, for communicating wirelessly with your movement monitors

3.4 Recording Modes

To suit a range of different recording requirements, a number of different recording modes are possible. Some monitor types do not support all recording modes.

3.4.1 Robust Synchronized Streaming

In the robust synchronized streaming mode, you can stream data from multiple, synchronized monitors directly to your computer. Data is buffered on the monitors, so no data is lost even if there are interruptions in the wireless signal. Only the SXTs can be used in this mode.

3.4.2 Rapid Synchronized Streaming

The rapid synchronized streaming mode is similar to the robust synchronized streaming mode, except data is not buffered on the monitors in order to minimize the latency of the streaming data. Latency on Linux and Mac OS is typically in the range of 8ms to 25ms, while latency on Windows is typically in the range of 10ms to 75ms. This recording mode is appropriate for biofeedback applications. In the event of interruptions in the wireless signal, data will be dropped from the stream. Only the SXTs can be used in this mode.

3.4.3 Synchronized Logging

In the synchronized logging mode, monitors log recorded data to their on-board flash memory. The monitors are synchronized wirelessly with each other while recording, so the individual logs can easily be synchronized with each other after the data has been imported from your monitor(s). In this mode, up to 32 monitors can be synchronized within a single “mesh”. Only WXTs and SXTs are able to use this mode.

3.4.4 Low Power Logging

All movement monitor products (SXTs, WXTs, and DWTs) are able to operate in the low power logging mode. In this mode, the monitors’ wireless radios are disabled, decreasing the power required for operation and enabling the monitors to run for longer periods of time. Since the mode does not use any wireless synchronization, each movement monitor will collect data independently and potentially at slightly different rates due to clock drift.

3.5 TK Motion Manager

TK Motion Manager is the default software suite bundled with the I2M movement monitor system. It provides an easy way to get up and running collecting data with your movement monitors.

3.6 NexGen Software Development Kit

The NexGen Software Development Kit (SKD) provides programming tools for software developers. These tools enable developers to write their own software capable of configuring and streaming data from the movement monitors. In addition, it also provides functions for converting the raw data files found on the monitor’s memory card into either a HDF5 (recommended) format or CSV. The SDK provides the same low level interface to the hardware that TK Motion Manager is built upon.

4 Downloading TK Motion Manager

TK Motion Manager is supported on the following platforms:

- Apple Macintosh OSX 64-bit
- Apple Macintosh OSX 32-bit
- Windows 32-bit (XP, Vista, Windows 7)
- Windows 64-bit (Vista, Windows 7)
- Linux 32-bit
- Linux 64-bit

To download the latest version of TK Motion Manager, visit:

<http://www.humancad.com/downloads/I2M/>

and select the version that matches your operating system.

Note (Windows Only): To simplify the Java configuration on the Windows platform, the 32- and 64- bit versions of TK Motion Manager come pre-bundled with the appropriate Java Runtime Environment (JRE). This adds about 70 Mb to the download size, but removes a major variable in the installation process.

Note (MacOSX and Linux): TK Motion Manager requires Java 1.6 to run. Make sure your Java installation is up to date before attempting to launch the application. In order to use the 64-bit version of TK Motion Manager, you also need to have the 64-bit Java JRE installed.

The download includes everything you need to get started, including:

- Drivers
- Firmware
- The TK Motion Manager desktop application

5 Installing TK Motion Manager

5.1 Macintosh OSX (x32/x64)

Unzip the contents of the downloaded zip file into the directory of your choice. No further steps are required.

5.2 Windows

Double click on the downloaded setup file. This will guide you through the installation process.

Note: When the setup utility is installing the hardware drivers, you may have be prompted with a warning that the drivers are not digitally signed. This is expected and it is OK to proceed.

Note: Due to read/write permission restrictions (UAC) in Vista and Windows 7 on the “Program Files” and “Program Files (x86)” directories, TK Motion Manager is installed to “C:/TKMotionManager”.

5.2.1 Windows XP

Windows XP will prompt you with the “Found New Hardware” wizard every time you plug an access point or docking station into a USB port for the first time. This happens even if you have already installed it on a different port, and may even happen if you have already installed it on the same port. This is a “feature” of Windows XP and not an issue in Vista or Windows 7. If you have a chain of multiple docking stations, you will be prompted for each one.

When you are prompted with the “Found New Hardware” wizard:

1. Select the “No, not this time” option and click “Next”
2. Select the “Install the software automatically” option and click “Next”.

5.3 Linux (x32/x64)

Unzip the contents of the downloaded zip file into the directory of your choice.

The appropriate permissions have to be set to interface with the hardware devices. This can be configured via the udev system. The user will need access to devices with the following vendor ID (VID) and product ID (PID):

Access Point: **VID:** 0x224F **PID:** 0x0001

Docking Station: **VID:** 0x224F **PID:** 0x0002

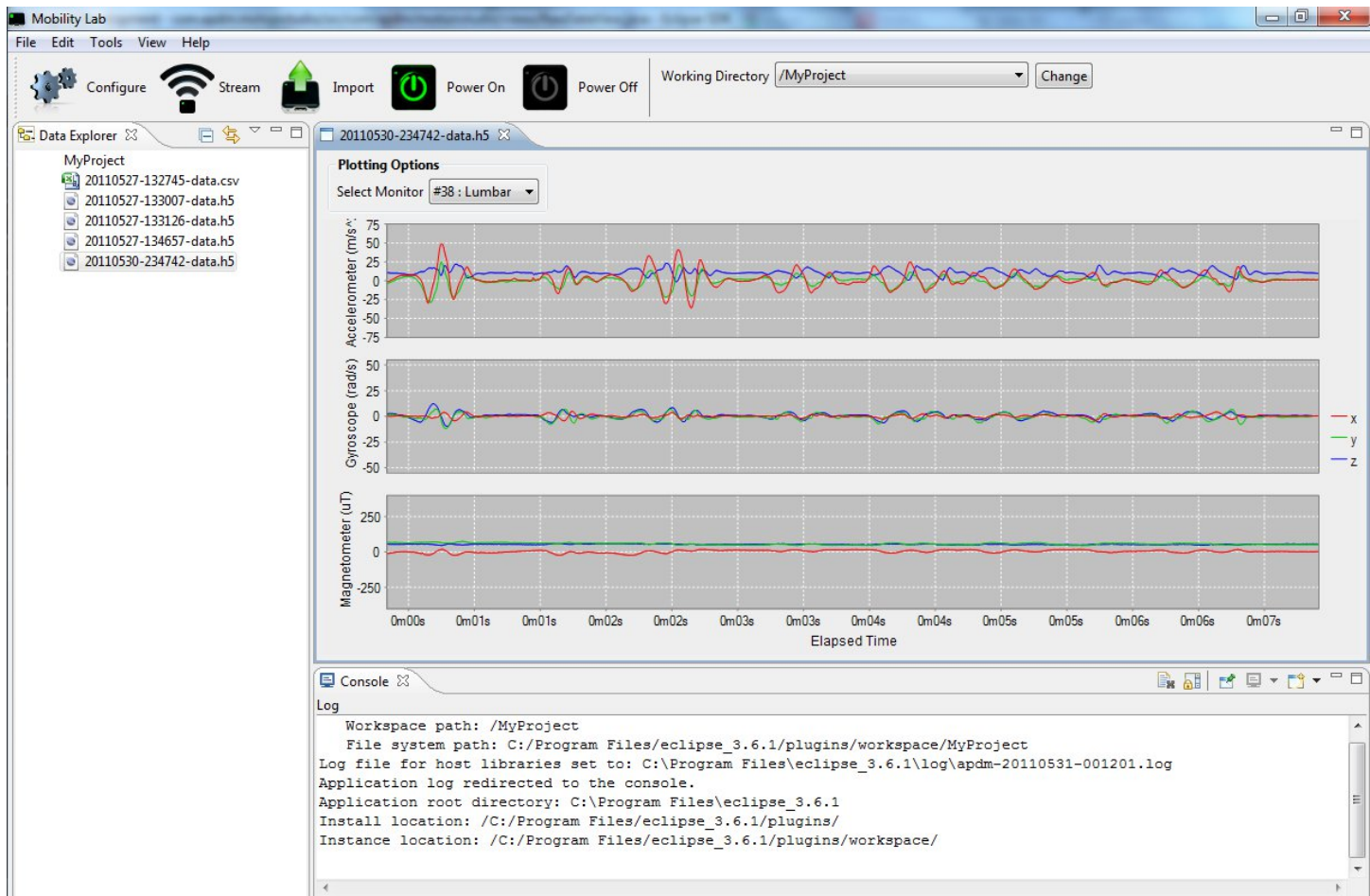
An example set of udev rules for the access point and docking station are as follows:

```
ACTION=="add", ATTRS{idVendor}=="224f", ATTRS{idProduct}=="0001", MODE:="0666"
```

```
ACTION=="add", ATTRS{idVendor}=="224f", ATTRS{idProduct}=="0002", MODE:="0666"
```

6 TK Motion Manager

TK Motion Manager is the default software suite bundled with the I2M movement monitor system. It provides an easy way to get up and running collecting data with your movement monitors. It also provides advanced configuration, recording, calibration, and data management features that enable you to take full advantage of the I2M movement monitor system.



The TK Motion Manager workspace

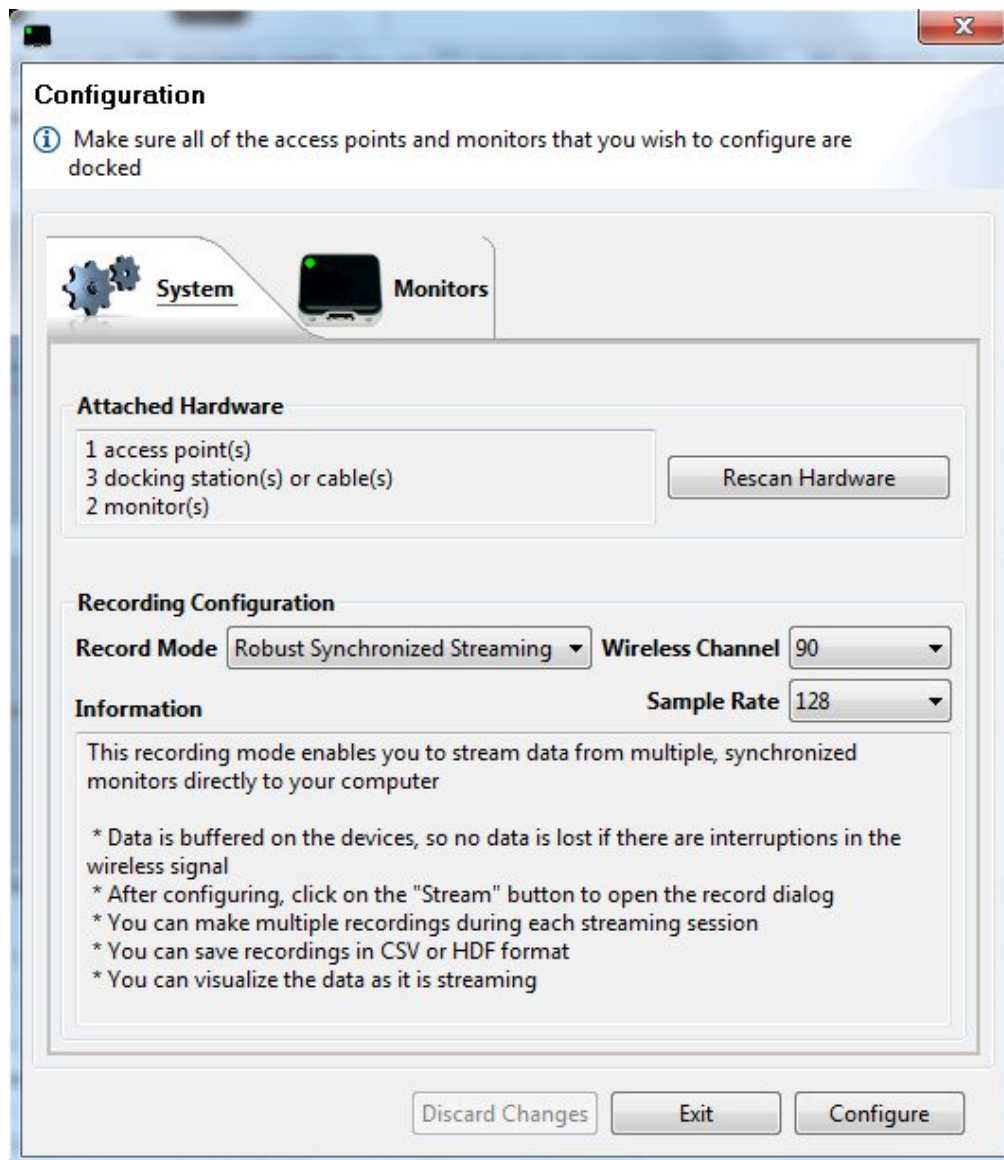
7 Configuration

NexGen movement monitors can be configured in a number of ways to match your recording needs. To open the configuration dialog, make sure your access points and docking stations are plugged into the computer and that your monitors are inserted into their docks. Press the “Configure” button in the application tool bar.



The “Configure” button in the toolbar

The configuration dialog will enable you to configure the settings of your individual monitors, in addition to system-wide settings.



The system configuration options of the configuration dialog

7.1 Automatic Firmware Updates

Whenever you press the “Configure” button, your hardware is first checked to ensure that the latest firmware is installed. If not, you will be prompted to automatically update your hardware to the latest versions of the firmware bundled with TK Motion Manager.

7.2 System Configuration

7.2.1 Attached Hardware

This window displays the NexGen hardware that is detected on your computer. If this list does not accurately specify the hardware that you have attached, you should press the “Rescan Hardware” button (see the next topic) to initiate the scan again.

7.2.2 Rescan Hardware

This option will search for NexGen hardware attached to your computer and refresh the configuration dialog.

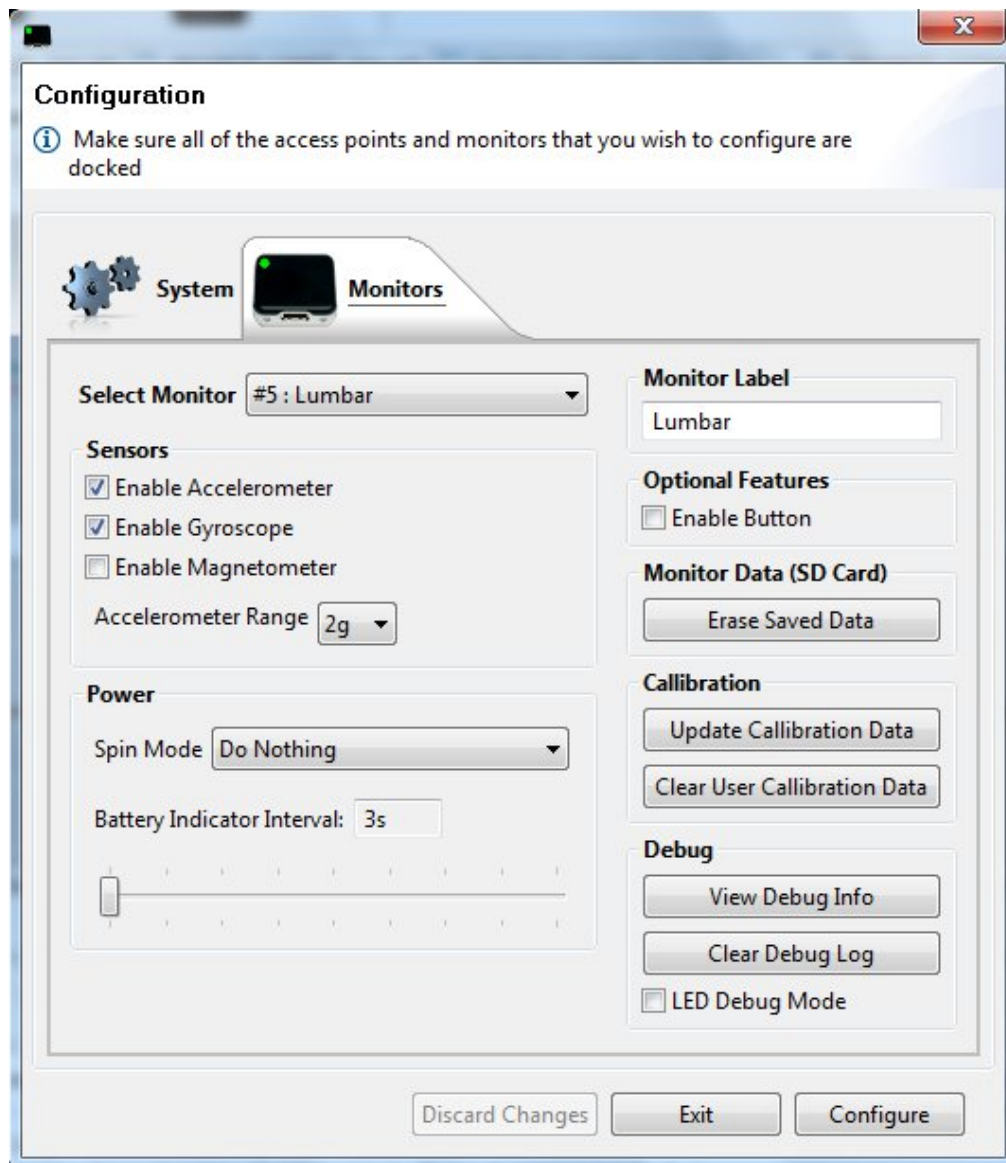
7.2.3 Record Mode

Use this option to specify how you wish to record data from your monitors:

- Robust Synchronized Streaming (SXTs only)
- Rapid Synchronized Streaming (SXTs only)
- Synchronized Logging (SXTs and WXTs only)
- Low Power Logging (SXTs, WXTs, and DWTs)

7.3 Wireless Channel

Movement monitors configured for wireless streaming or synchronized logging transmit data in the 2.4 ghz wireless spectrum range. Channel zero corresponds to roughly 2.40 ghz, and channel 90 corresponds to roughly 2.49 ghz. Many other consumer electronic devices make use of radio frequencies in the 2.4 ghz spectrum, such as WiFi routers, cordless phones, and blue-tooth devices. Because of this, it’s important to choose a channel that is not already in use by another device. The most common source of interference is from WiFi routers. You can determine the channel that the WiFi router is running on and determine its corresponding frequency from the following URL: http://en.wikipedia.org/wiki/IEEE_802.11. The default channel for TK Motion Manager is 90, because it is typically out of the range of most WiFi routers.



The monitor configuration options of the configuration dialog

7.4 Monitor Configuration

Use the "Select Monitor" combo box to specify the monitor you wish to individually configure.

7.4.1 Sensors

Enable or disable on-board sensors. If your application does not require data from a particular sensor type, turning them off can reduce file sizes and improve battery life. The gyroscopes in particular use a significant amount of battery power.

7.4.2 Accelerometer Range

Specifies whether the range of the accelerometer is ± 2 g or ± 6 g. This is approximately equal to ± 20 or ± 60 m/s², although some sensors may have a slightly larger range before saturating. If your application does not need the full ± 6 g range, using the ± 2 g range will slightly improve the signal to noise ratio (SNR) of your accelerometer readings.

7.4.3 Power

Spin mode. You can optionally assign an action to occur when the monitor is spun clockwise or counterclockwise about its z-axis. For example, spinning the monitor when it is lying flat on a table. Gyroscopes need to be enabled on the monitor in order to make use of this feature. The following spin modes are available:

- Do Nothing.
- Power Down. When this setting is used, the monitor will power down completely when spun rapidly. The monitor will need to be reconfigured before the next use in order to reset the clock. This mode is appropriate for short to long term storage.
- Standby. When this setting is used, all components except the clock are powered down. This mode is appropriate for short term storage (a few days). The monitor will start recording again the next time it is docked and undocked. If it has been stored long enough for the battery to completely run out, reconfiguring or pressing the “Power On” button while it is docked will reset the clock.

Battery Indicator Interval. Specifies how often the LED sequence indicating the current battery level is displayed. This can be set from a value of 3 s to 768 s. The battery level is indicated by the number of blinks, ranging from 1 blink (low battery) to 4 blinks (full battery). The battery indicators on synchronized monitors will also be synchronized.

7.4.4 Monitor Label

By specifying a label for a monitor, this label will be persisted along with the data in both the CSV and HDF file types. Example labels are “Right Arm” and “Jane Doe”. This is often easier than associating data with a monitor ID (e.g., “56”). There is a 15 character limit for the label.

7.4.5 Monitor Data (SD Card)

Erase Saved Data Pressing this button will delete all of the recorded data on the specified monitor. This does not include configuration data. The data is deleted the next time the monitor is undocked.

7.4.6 Calibration

Update Calibration Data Use this option in the event that your monitor needs to have its calibration data updated. You will have to specify the calibration file to use.

7.4.7 Debug

View Debug Info. This option allows you to print out detailed information about the monitor configuration and a log of any errors that have been encountered during its operation. The output is placed into a special page in the console view of the main application. Use the “Display Selected Console” button to select the appropriate console view.

Clear Error Log. Use this option to clear the error log on the monitor. This is useful when debugging to ensure that error log entries are not historical.

LED Debug Mode. When this option is selected, the monitor’s LED will display debug information while recording, instead of blinking in unison with the rest of the monitors. See [Monitor Reference](#) for details on the LED modes.

7.5 When you are done configuring your system

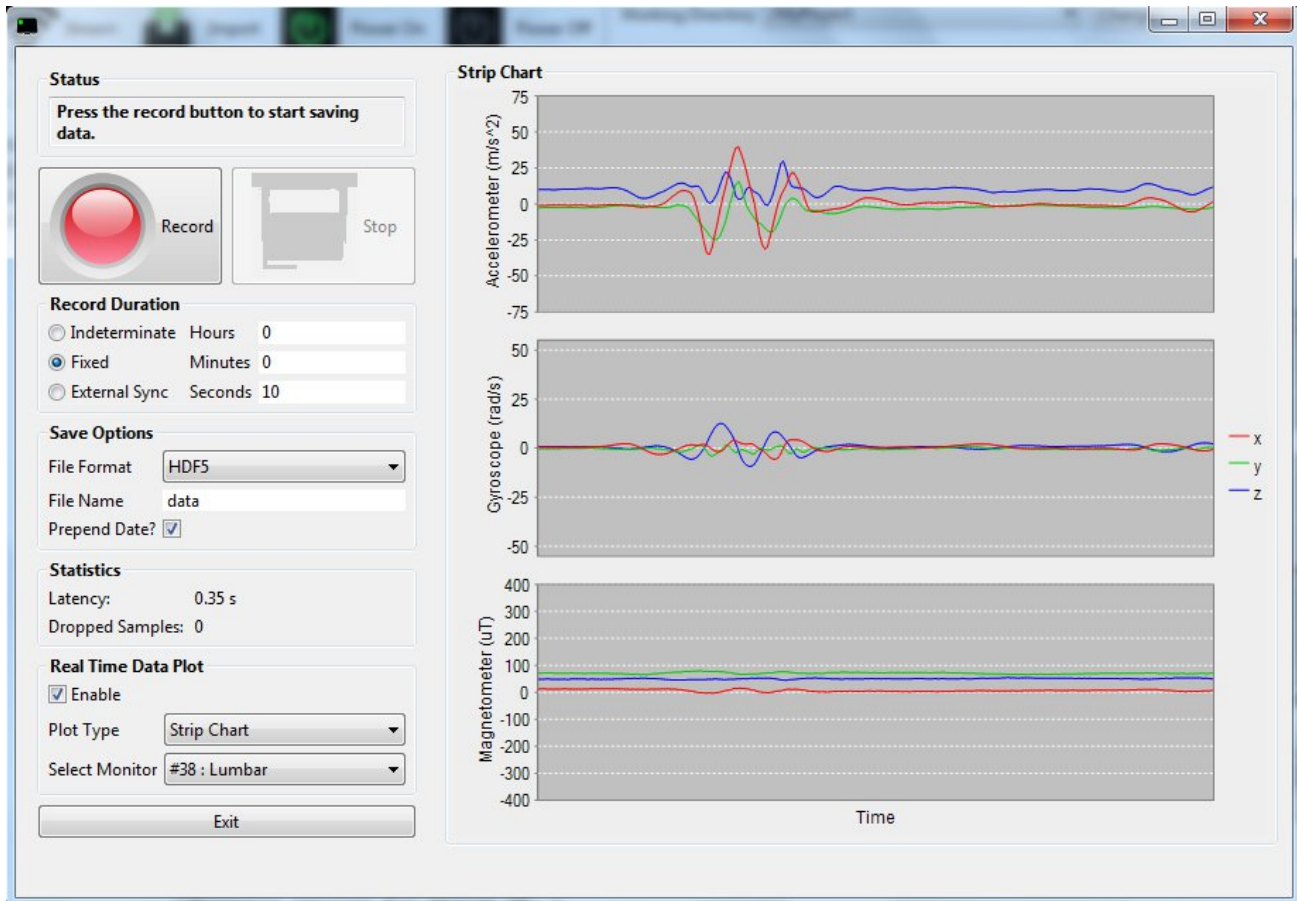
Press the “Configure” button to complete the configuration. When the configuration progress dialog completes, unplug your monitors from their docking stations.

7.6 Re-configuration

Wireless streaming configuration data is stored on the access points. Re-configuration is required whenever the access points are unplugged from the host computer or the host computer is rebooted. Re-configuration is not required if TK Motion Manager is shut down and restarted, or if one of the logging modes are currently configured.

8 Synchronized Streaming Modes

If one of the synchronized streaming modes (robust or rapid) is selected in the configuration dialog (SXTs only), you can stream data from multiple, synchronized monitors directly to your computer.



The synchronized streaming dialog

8.1 Starting a Streaming Session

To start a streaming session, press the “Stream” button in the application tool bar to bring up the recording dialog.



The “Stream” button in the toolbar

The stream dialog will enable you to configure how you view and record streaming data from your SXTs.

8.2 Real Time Chart

The real time chart allows you to view the data streaming from your monitors. Use the “Select Monitor” combo box to view the streaming data from different monitors.

Note: If you notice excessive latency or a very slow frame rate, consider unchecking the “Enable” checkbox, which will stop the real time plotting of data and free up more processing power on your computer.

8.3 Record Duration

You can select between fixed and indeterminate recording durations:

Fixed duration. You can specify the number of hours, minutes, and seconds for each recording. You can press the “Stop” button to stop your recording before the specified duration has lapsed.

Indeterminate duration. Your recording will continue until you press the “Stop” button.

8.4 Save Options

8.4.1 File Format

You can record to either the HDF5 (<http://www.hdfgroup.org/>) or the CSV file format.

HDF5 is an open format for storing structured, binary data. Files are more compact than their CSV counterparts and can be opened directly in a number of analysis software packages, including Matlab. See the chapter on “Working with HDF5 Files” in this document for more information.

CSV is a plain-text format that can be opened in spreadsheet software applications, such as Excel or OpenOffice, in addition to most analysis software.

8.4.2 File Name

Specify the name of the data file recorded to disk.

8.4.3 Prepend Date

If checked, the date and time of the start of the recording are added to the beginning of the file name.

8.5 Statistics

8.5.1 Latency

Displays the current latency between the time data is recorded to the time it is received by the computer. Latency may be increased by poor wireless reception or monitors that are occluded from the access point (e.g., against a metal chair back, around a corner, etc.). Additional latency will be incurred by the plotting of the data to the screen.

8.5.2 Dropped Samples

Displays the number of samples dropped since the current streaming session was started. There are only a few extreme cases where samples will be dropped when using the robust streaming mode. In the event that data is dropped, all of the recorded data will be present on the monitor's on-board memory and can be recovered manually using the Import Manager after the monitor is docked.

8.6 Starting and stopping

When you are ready to record press the “Record” button in the stream dialog.

To stop your recording press the “Stop Button”. Your data will be saved to your current working directory and the recording will be plotted on the screen.

The record dialog will then prepare for additional recordings.

9 Synchronized Logging Mode

If the synchronized logging mode is selected in the configuration dialog (SXTs and WXTs only), you can log data from more than one monitor to their on-board flash memory and the monitors are synchronized wirelessly with each other.

9.1 To start recording

Disconnect the monitors from their docking stations after configuration. After a few seconds to initialize, they will start recording to their flash memory. When within wireless contact with one-another, they will synchronize their clocks. To start an additional recording in a separate file, connect and disconnect the monitors from their cables or docking stations. No re-configuration is necessary.

9.2 To import recorded data

Plug the monitor into a docking station. Click on the "Import Data" button in the toolbar.

10 Low Power Logging Mode

If your monitors are configured for low power logging (SXTs, WXTs, and DWTs), you can log data from one or more monitors at a time to their on-board flash memory. Wireless radios are turned off to save power. Multiple monitors will not be synchronized, and some level of clock drift will occur during long recordings.

10.1 To start recording

Disconnect the monitors from their cables or docking stations after configuration. After a few moments to initialize, they will start recording to their flash memory. When within wireless contact with one-another, they will synchronize their clocks. The monitors will stop recording once they are docked again. No re-configuration is necessary.

10.2 To import recorded data

Plug the monitor into a docking station. Click on the "Import Data" button in the toolbar.

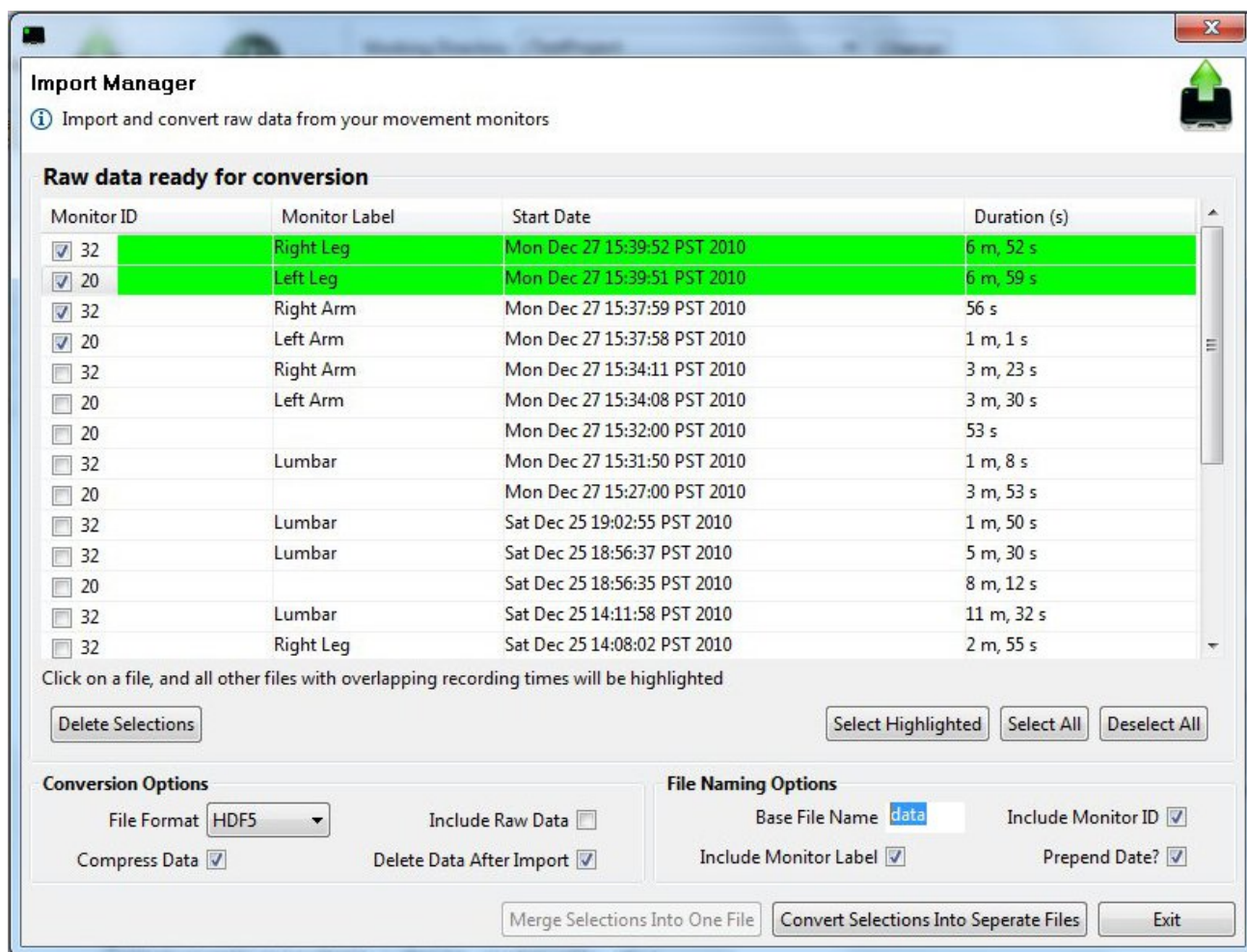
11 Import Manager

The Import Manager enables you to import the data saved on the monitors, and to convert it to a format that can be read by a number of software analysis packages. Click on the “Import” button in the toolbar to open the Import Manager.



The Import button in the toolbar

When you open the import manager, the data from all currently docked monitors are moved to an import directory on your PC. These raw data files are displayed in the table at the top of the import directory.



The Import Manager dialog window

11.0.1 Selecting Data For Import

In the table at the top of the Import Manager, you can select data for importing by clicking in the checkboxes on the left.

When you select a file in the table by clicking anywhere on the row, any other files that have overlapping recording times will be highlighted. This functionality aids in finding and merging of data that was recorded on multiple monitors synchronously.

11.0.2 Conversion Options

File Format. You can record to either the HDF5 (<http://www.hdfgroup.org/>) or the CSV file format. HDF5 is an open format for storing structured, binary data. Files are more compact than their CSV counterparts and can be opened directly in a number of analysis software packages, including Matlab. See the chapter on “Working with HDF5 Files” in this document for more information. CSV is a plain-text format that can be opened in spreadsheet software applications, such as Excel or OpenOffice, in addition to most analysis software.

Include Raw Data. Select this option if you want to include the raw sensor data in the import file. This is the raw sensor data, and has not been processed or converted to SI units.

Compress Data. When importing data into an HDF5 file, you can choose to compress the data. The resulting file will be significantly smaller, but it will take longer to perform the import. **Note:** Matlab versions before 2009a cannot read compressed HDF5 data.

Delete Data After Import. When selected, the raw data will be deleted after import.

11.0.3 File Naming Options

Base File Name. Specify the base name of the data file the data is being imported into.

Include Monitor ID. If selected, the case ID of the monitor being imported from will be embedded in the file name.

Include Monitor Label. If selected, the label of the monitor being imported from will be embedded in the file name.

Prepend Date. If checked, the date and time of the start of the recording are added to the beginning of the file name.

11.0.4 Import Options

Merge Selections Into One File. If clicked, all selections will be merged into a single HDF file after conversion. Multiple selections from the same monitor cannot be merged into a single HDF file.

Convert Selections Into Seperate Files. If clicked, each selection will be imported into a seperate file after conversion.

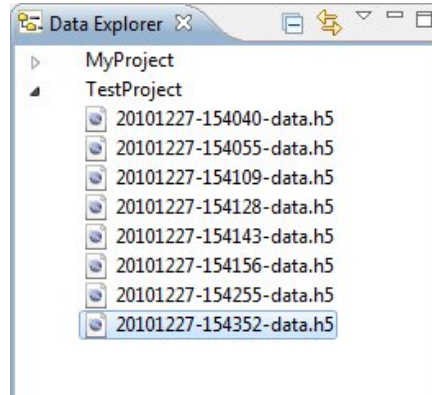
11.0.5 After Import

Imported data will show up in your current working directory. Right click on it and select "Plot" to plot the data to the screen.

12 Managing Your Data

12.1 The Data Explorer

The Data Explorer can be used to help you organize and view your data.

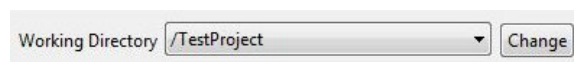


The Data Explorer view

The Data Explorer shows a hierarchical view of your projects and folders. Projects are the top level containers in the Data Explorer, and can hold any number of folders. Folders hold other folders or data files.

12.1.1 Working Directory

Your current Working Directory Tool is displayed in the application's toolbar. You can change your Working Directory by clicking on the "Change" button and selecting a different project or folder.



The Working Directory Tool in the toolbar

Whenever you record data through wirelessly streaming or import logged data from your monitor(s), the data will appear in your current Working Directory.

12.1.2 Creating new projects

1. Right-click in the Data Explorer and select "New → Project..."
2. Select the "Project" option from the New Project Wizard
3. Specify the project name
4. By default, the project and all contained files will be placed in TK Motion Manager's workspace directory, which is indicated in the console when TK Motion Manager is launched. If you wish to specify a different location on your hard drive to create the project, uncheck the "Use default location" checkbox and

choose the location of the new directory.

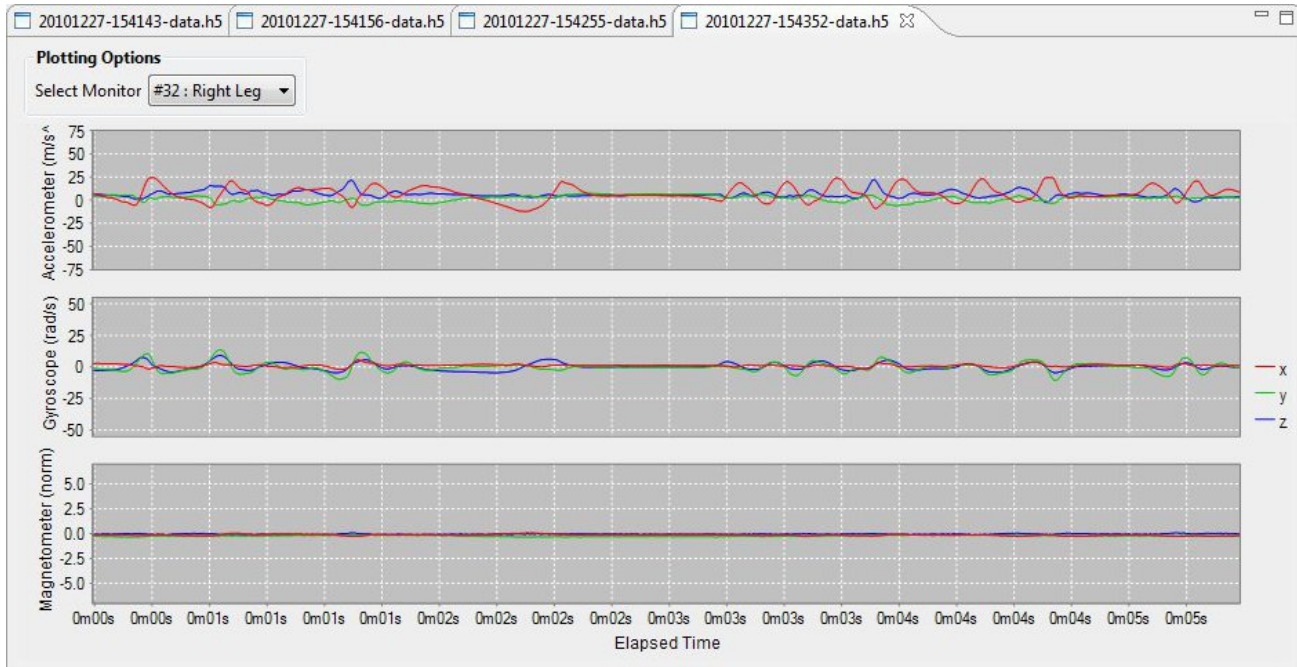
5. Click “Finish”
6. To make this your current working directory, click on the “Change” button in the Working Directory Tool and choose the new project.

12.1.3 Creating new folders in projects

1. Right-click in the Data Explorer and select “New → Folder”
2. Select the parent project or folder for the folder you wish to create
3. Specify the folder name
4. By default, the folder will be created in the project’s directory structure on your hard drive. It is possible, however, to associate the folder with a project but to store the data in a different location. If you wish to specify a different location on your hard drive to create the folder, click the “Advanced” button, select the “Link to alternate location(Linked Folder)” option, and specify the folder on your hard drive that you wish to store this folder’s data in.
5. Click “Finish”
6. To make this your current working directory, click on the “Change” button in the Working Directory Tool and choose the new folder.

12.2 Plotting

To plot a recorded file, either double-click on the file in the Data Explorer, or right-click on the file and select the “Plot” option. The plot dialog enables you to specify the monitor to plot.



The data plot view

13 Working with HDF5 Files

HDF5 is the preferred format for storing NexGen movement monitor data. It is a standard format for scientific data that is efficient and widely supported. It uses less space than CSV, is faster to load, and supports more structured data. This section will cover the organization of the NexGen movement monitor data and the basics of reading HDF5 files in MATLAB.

13.1 HDFView

A free program called HDFView (<http://www.hdfgroup.org/hdf-java-html/hdfview/>) can be used to explore, plot, and export this data into other formats. A variety of free open source tools for working with HDF files are also available at <http://www.hdfgroup.org/HDF5/release/obtain5.html>.

13.2 Data Organization

HDF5 files are organized like a file structure. The root of the file contains two attributes. One is a list of monitor IDs that have data stored in this file. The other is a version number for the organization of the HDF 5 file.

13.3 File Structure

13.3.1 Version 2

- **MonitorLabelList** Attribute containing an array of monitor labels in the same order as the CaselIdList
- **CaselIdList** Attribute containing an array of monitor case IDs in the same order as the MonitorLabelList
- **FileFormatVersion** Attribute containing the file format version (2)
- **Annotations** Table containing annotations
 - **Time** Annotation time in epoch microseconds
 - **Case ID** A movement monitor case ID associated with the annotation
 - **Annotation** The annotation string
- **AA-XXXXXX** A group is included in the file for each monitor in the CaselIdList, with the name equal to the case ID
 - **SampleRate** Attribute containing the output data rate for the monitor
 - **DecimationFactor** Decimation factor for the monitor's internal processing
 - **ModuleID** The module ID for the monitor
 - **TimeGood** Flag indicating whether the time has been set on the monitor since it powered on
 - **RecordingMode** One of: "Wireless streaming", "Synchronized logging", or "Unsynchronized logging"
 - **DataMode** Indicates whether the data was retrieved wirelessly or copied from the monitor's internal storage while docked. One of: "Streamed wirelessly" or "Logged to monitor"
 - **AccelerometersEnabled** 1 for enabled, 0 for disabled

- **GyroscopesEnabled** 1 for enabled, 0 for disabled
- **MagnetometersEnabled** 1 for enabled, 0 for disabled
- **DecimationBypass** Internal use, deprecated
- **CalibrationVersion** Version of the calibration data used to convert from raw samples to calibrated SI units
- **VersionString1** Firmware version string 1
- **VersionString2** Firmware version string 2
- **VersionString3** Firmware version string 3
- **CalibratedDataPopulated** 1 for populated, 0 for unpopulated
- **LocalTimeOffset** Time in milliseconds to add to UTC to convert to local time
- **SyncValue** Dataset containing the internal sync value for each sample
 - * **Units** Attribute string containing the timestamp units (1/2560th of a second since 0:00 Jan 1, 1970 UTC)
- **Time** Dataset containing a timestamp for each sample
 - * **Units** Attribute string containing the units (microseconds since 0:00 Jan 1, 1970 UTC)
- **Calibrated** Group containing calibrated data
 - * **Accelerometers** Dataset containing accelerometer data (Nx3)
 - **Units** Attribute string containing the accelerometer units (m/s²)
 - **Range** Attribute containing the range setting for the accelerometer (2g or 6g)
 - * **Gyroscopes** Dataset containing gyroscope data (Nx3)
 - **Units** Attribute string containing the gyroscope units (rad/s)
 - * **Magnetometers** Dataset containing magnetometer data (Nx3)
 - **Units** Attribute string containing the magnetometer units (μ T)
 - * **Temperature** Dataset containing the temperature (Nx1)
 - **Units** Attribute string containing the temperature units (°C)
 - * **TemperatureDerivative** Dataset containing the temperature derivative (Nx1)
 - **Units** Attribute string containing the temperature derivative units (°C/s)
- **Raw** Group containing raw data if selected during import
 - * **Accelerometers**
 - * **Gyroscopes**
 - * **Magnetometers**
 - * **DataFlags**
 - * **OptData**
 - * **Temperature**
 - * **TemperatureDerivative**

13.3.2 Version 1

This version is deprecated. All new files created will use the most recent version.

- **Device_List** Attribute containing a list of monitors present in the file
- **File_Format_Version** Attribute containing the file version
- **Annotations** Table containing annotations
 - **Time** Annotation time in epoch microseconds
 - **Device ID** A movement monitor ID associated with the annotation

- **Annotation** The annotation string
- **Opal.xxx/** Group containing information about and data from monitor ID xxx
 - **Sample_Rate** Attribute containing the output data rate for the monitor
 - **Decimation_Factor** Decimation factor for the monitor's internal processing
 - **Time_Good** Flag indicating whether the monitor has had its time set since turning on
 - **Decimation_Bypass** Internal use, deprecated
 - **Calibration_Version** Version of the calibration data used to convert from raw samples to calibrated SI units
 - **Version_String1** Firmware version string 1
 - **Version_String2** Firmware version string 2
 - **Version_String3** Firmware version string 3
 - **Acceleration** Dataset containing data from the accelerometers ($N \times 3$)
 - * **Units** Attribute string containing the acceleration units (m/s^2)
 - **Angular_Velocity** Dataset containing data from the gyroscopes ($N \times 3$)
 - * **Units** Attribute string containing the angular velocity units (rad/s)
 - **Magnetic_Field** Dataset containing data from the magnetometers ($N \times 3$)
 - * **Units** Attribute string containing the magnetic field units (a.u.)
 - **Temperature** Dataset containing the temperature of the monitor ($N \times 1$)
 - * **Units** Attribute string containing the temperature units ($^{\circ}\text{C}$)
 - **Temperature_Derivative** Dataset containing the rate of change of temperature
 - * **Units** Attribute string containing the temperature derivative units ($^{\circ}\text{C/s}$)
 - **Sync_Value** Dataset containing the internal timestamp of each sample
 - * **Units** Attribute string containing the timestamp units (1/2560th of a second since 0:00 Jan 1, 1970 UTC)
 - * **Time** Dataset containing the time for each sample in microseconds since 0:00 Jan 1, 1970 UTC

Additional fields present when raw data is also stored:

- **Opal.XX/**
 - **Calibration_Data** Attribute containing binary block of calibration data
 - **Raw_File_Version** Attribute containing the version string of the raw file (if this was converted from a .apdm file instead of streamed)
 - **Accelerometers_Raw** Dataset containing raw accelerometer data ($N \times 3$)
 - **Gyroscopes_Raw** Dataset containing raw gyroscope data ($N \times 3$)
 - **Magnetometers_Raw** Dataset containing raw magnetometer data ($N \times 3$)
 - **Data_Flags** Dataset containing flags used for processing the raw data
 - **Opt_Data** Dataset containing several measurements taken at a low data rate
 - **Temperature_Raw** Dataset containing lowpass filtered, but uncalibrated temperature data ($N \times 1$)

13.4 Working with HDF 5 in MATLAB

MATLAB contains two high level functions for working with HDF5 files. Additional help and examples are included in the built in help documentation for these functions.

`hdf5info` reads the structure of the file and all of the attribute values and returns them in an easy to browse MATLAB structure.

`hdf5read` reads a complete dataset or attribute from the HDF5 file.

Additionally, one more high level helper function is included with the NexGen movement monitor software. This function also contains built in help documentation and examples.

`hdf5readslab` reads a portion of a dataset from the HDF5 file.

13.5 Examples

Below is simple example of loading acceleration data from an NexGen movement monitor HDF5 file (version 2) in MATLAB.

```
filename = 'example.h5';
try
    vers = hdf5read(filename, '/FileFormatVersion');
catch
    try
        vers = hdf5read(filename, '/File_Format_Version');
    catch
        error('Couldn''t determine file format');
    end
end
if vers ~= 2
    error('This example only works with version 2 of the data file')
end
caseIdList = hdf5read(filename, '/CaseIdList');
groupName = caseIdList(1).data;
accPath = [groupName '/Calibrated/Accelerometers'];
fs = hdf5read(filename, [groupName '/SampleRate']);
fs = double(fs);
acc = hdf5read(filename, accPath)'; %Transposed to make Nx3 in MATLAB
t = (1:size(acc,1))/fs;
figure;
plot(t,acc);
```

A more complicated example using the flexibility of HDF5 to load and process only part of a data set. This can be useful when the data set is too large to fit into memory. Care is taken not to attempt to read beyond the end of the file.

```

filename = 'example.h5';
try
    vers = hdf5read(filename, '/FileFormatVersion');
catch
    try
        vers = hdf5read(filename, '/File_Format_Version');
    catch
        error('Couldn''t determine file format');
    end
end
if vers ~= 2
    error('This example only works with version 2 of the data file')
end
idList = hdf5read(filename, '/CaseIdList');
groupName = idList(1).data;
accPath = [groupName '/Calibrated/Accelerometers'];
fs = hdf5read(filename, [groupName '/SampleRate']);
fs = double(fs);
fhandle = H5F.open(filename, 'H5F_ACC_RDONLY', 'H5P_DEFAULT');
dset = H5D.open(fhandle, [groupName '/Calibrated/Accelerometers'], 'H5P_DEFAULT');
dspace = H5D.get_space(dset);
[ndims, dims] = H5S.get_simple_extent_dims(dspace);
nSamples = dims(1);
nSamplesRead = min(nSamples, 60*fs); %read at most one minute of data
accSegment = hdf5readslab(filename, accPath, [0,0], [nSamplesRead, 3])';
t = (1:nSamplesRead)/fs;
figure;
plot(t,accSegment);

```

13.6 Notes

- Arrays in MATLAB use the FORTRAN convention of storing them in memory by column then row, instead of the C convention (used by HDF 5) of row then column. This has the effect of making the returned arrays transposed from how this document (and many other interfaces to HDF5) claim they are laid out.
- Older versions of MATLAB (before 2009a) did not support the compression used in TK Motion Manager's HDF 5 files. If you are using one of these older versions, the free h5repack utility available from the HDF Group can remove the compression. This utility is available at:

<http://www.hdfgroup.org/HDF5/release/obtain5.html>

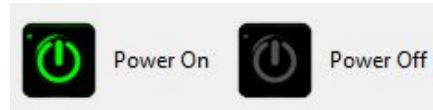
The command to repack the file is:

```
h5repack -f NONE example.h5 example_no_compression.h5
```

14 Powering Your Monitors On and Off

14.1 Docking Monitors

In most situations, it is sufficient to simply dock your monitors when not in use. When docked, monitors stop recording, stop broadcasting, and start charging their batteries. Once fully charged, the batteries will enter a trickle charge mode to keep them topped off.



The power buttons in the toolbar

14.2 Power Off

For transport or storage, it is often desirable to power off all system components. This can be done by docking the monitors and clicking on the “Power Off” button in the toolbar. When this option is chosen, the monitors will power down the next time they are undocked.

Alternately, you can configure your monitor to power down or standby when it is rapidly spun about the z-axis (see [7.4.3](#) for details).

14.3 Power On

From a powered off state, the monitors can be powered on either by configuring them through the configuration dialog, or by docking them and pressing the “Power On” button.

Note: Reconfiguration is required for synchronized streaming modes if the access point was also powered down or suspended.

15 Firmware Updates

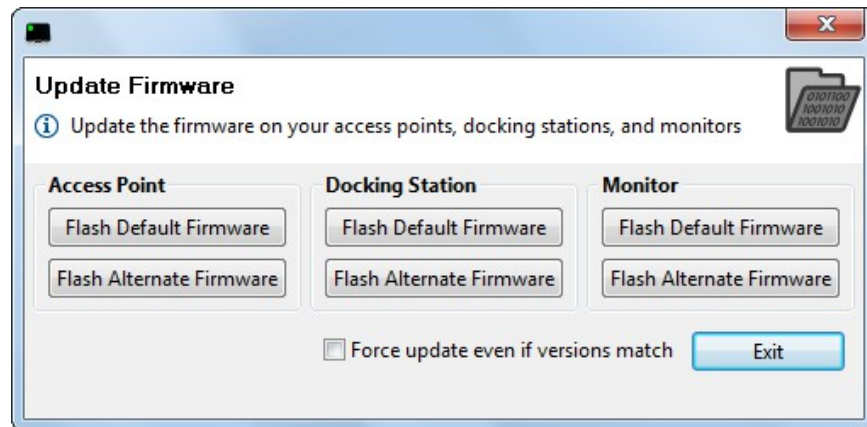
Firmware controls the various hardware components of your I2M product line (monitors, access points, and docking stations). It is important to keep the firmware up to date to ensure that your system gets the latest bug fixes and has access to the latest features. Firmware updates are bundled with updates to TK Motion Manager. Firmware can be updated either automatically or manually.

15.1 Automatic Firmware Updates

Whenever you configure your system, your hardware is first checked to ensure that the latest firmware is installed. If not, you will be prompted to automatically update your hardware to the latest versions of the firmware bundled with your system.

15.2 Manual Firmware Updates

Firmware can be updated manually as well. This functionality can be used to either flash the default firmware to one of the hardware components, or to flash a different version. To access the “Update Firmware” dialog, click on “Tools→ Update Firmware” in the menu bar.



The manual firmware update tool

15.2.1 Flash Default Firmware

Your system comes bundled with an up to date version of the firmware. Pressing this button will re-flash this version of the firmware onto the specified monitor.

15.2.2 Flash Alternate Firmware

For testing purposes or to address an issue in a timely fashion, it may be necessary to flash a monitor with a version of the firmware that is different than the bundled version. You will have to specify the alternate firmware file to use with this option.

15.2.3 Force Update

When using either of the options above, if the firmware version on the target device(s) matches the firmware version to be flashed, the device will be skipped. If the “Force update even if versions match” checkbox is selected, however, the firmware will be flashed even if the versions match. This may be necessary in some cases to recover a malfunctioning device.

16 Calibration

16.1 Factory Calibration

Your monitors come pre-calibrated from NexGen. Each monitor is calibrated individually in a 12 hour procedure that determines optimal scaling factors and offsets for the accelerometers, gyroscopes, and magnetometers across a wide range of orientations and temperatures.

16.1.1 Updating Factory Calibration

There may be rare cases where the factory calibration data is deleted from your monitor(s) due to an issue with the SD card. In these scenarios, it may be necessary to re-flash the factory calibration onto your monitor using the “Flash Factory Calibration” button in the monitor tab of the configuration dialog. If you believe that you have a poorly calibrated monitor and would like to discuss your options,

Please contact us at:

email: techsupport@nexgenergo.com

telephone: 514-685-8593

16.2 User Calibration

While the factory calibration is optimal at the time of shipping, all low power sensors like the ones used in NexGen’s monitor’s are subject to small changes over time and may require re-calibration. This is something that can be done by NexGen, but we are also dedicated to providing tools to enable end users to recalibrate their own devices.

16.2.1 Magnetometer Recalibration

The first user calibration routine that is available in TK Motion Manager is magnetometer recalibration. To perform this task, click on the “Tools”→“Recalibrate Magnetometer” option in the menu bar. This wizard will guide you through the process of recalibrating the magnetometers on your monitor(s).

16.2.2 Accelerometer Recalibration

Coming soon!

16.2.3 Gyroscope Recalibration

Coming soon!

16.3 Clearing User Calibration

If you wish to revert to the factory calibration settings, you can clear any user calibration that you have applied. This can be accomplished through the “Clear User Calibration” button in the monitor tab of the configuration dialog.

17 Monitor Reference

17.1 Charging

A movement monitor charges its internal battery any time it is connected to a docking station. At the optimal charge rate the movement monitors internal battery will complete its bulk charge (80%-90%) within an hour for a fully discharged battery. It is recommended that the movement monitor be charged for up to 3 hours to provide a peak charge to the battery ensuring it has the longest run time and improves battery life.

Warning: Your movement monitor uses a lithium battery. This battery may only be charged over a limited temperature range. Never attempt to dock or charge your Opal when the temperature experienced can be outside the range of 0 to 45 degrees Celsius (32 to 113 degrees Fahrenheit). The recommended charging and docking temperature range is between 5 to 35 degrees Celsius (40 to 95 degrees Fahrenheit).

17.2 Powering Down

If you wish to power down your monitors for storage or travel, dock or plug in the monitors you wish to power down and select the “Tools→Halt All Monitors” option in TK Motion Manager. After this is selected, all monitors will power down when they are undocked or unplugged.

17.3 Data Storage

The movement monitors utilize a flash card to store data while logging. This data can be downloaded by using a docking station to dock the movement monitor. When the movement monitor is docked it finishes up writing to the internal flash card and then releases it to the docking station. At this time the docking station indicates to the PC that there is a new read only removable drive to be mounted. Using your file browser you can navigate to the removable drive and copy the files off of it. The files are in a proprietary raw format and need to be converted to either a HDF5 or CSV format that will provide data in calibrated SI units. This conversion happens automatically if TK Motion Manager is used to import the data. Alternately, there are functions in the SDK to do this conversion programmatically.

17.4 Cleaning

Cleaning the movement monitors case should be done by wiping the bottom of the case where it contacts the skin with Rubbing alcohol or other cleaning wipe. If the entire case needs to be cleaned use only an ethyl alcohol or isopropyl alcohol based wipe. Methyl alcohol should be avoided for cleaning the top since it will cause degradation of the plastic over time. The movement monitor should not be submerged in any liquids or

subjected to any high temperatures for cleaning. The straps on the monitor can be cleaned by wiping them down with Rubbing alcohol. Alternatively the straps can be removed and washed separately using mild soap and water.

17.5 Storage

Storage of the movement monitor should be in a dry static free location. An anti-static bag or in the supplied case is recommended. The movement monitor should also not be subjected to any large G forces to prevent damage or changes to the calibration of the sensors in the monitor. It is recommended for the health of the battery to have at least a bulk charge during storage.

17.6 Drivers

Drivers are provided as part of the library distribution and TK Motion Manager. Instructions for installing drivers are provide in the “Hardware Driver Installation” section of this document.

17.7 Firmware Updates

Updating the movement monitor firmware should be done using the TK Motion Manager software.

17.8 Technical Specifications

- The accelerometer range is $\pm 58.8 \text{ m/s}^2$ (6 g) (optionally $\pm 19.6 \text{ m/s}^2$ (2 g)).
- Accelerometers have a typical noise density of $1.3 \text{ mm/s}^2 / \sqrt{\text{Hz}}$.
- The X and Y axis gyros have a range of $\pm 34.9 \text{ rad/s}$ (2000 dps)
- The Z axis gyro has a range of $\pm 26.8 \text{ rad/s}$ (1500 dps)
- The X and Y axis gyros have a typical noise density of $0.81 \text{ mrad/s} / \sqrt{\text{Hz}}$
- The Z axis gyro have a typical noise density of $2.2 \text{ mrad/s} / \sqrt{\text{Hz}}$
- Magnetometers have a range of $\pm 6 \text{ Gauss}$
- The magnetometers have a typical noise density is $160 \text{ nT} / \sqrt{\text{Hz}}$
- Positive X is pointing from the monitor toward the connector. Positive Y is pointing left of X looking top down at the monitor. Z is pointing up out of the top of the case. Angular velocity sign is defined according to a right hand rule. A counterclockwise rotation about the Z axis looking from the +Z direction is positive.

17.9 LED Reference

17.9.1 Status Codes and LED Colors/Patterns

The LEDs on the access points and movement monitors provide important information about the operating state of the hardware, including error statuses. The tables below list the LED patterns associated with these states and can be useful in troubleshooting issues encountered with the hardware.

17.9.2 Movement Monitor LED Reference

Movement monitors contain a RGB LED capable of outputting a wide array of colors to the user to indicate its current state. The following colors are used: white (○), red (●), yellow (●), green (●), cyan (●), blue (●), magenta (●), and led off (●). In the off state the LED will appear as a non illuminated white dot in the corner of the monitor opposite the docking connector. All LED patterns are output on a repeating cycle which may vary in period depending on the pattern. In all cases the last color listed will stay constant until the pattern repeats. For example “●●●” will blink yellow twice and then stay off until the pattern repeats.

State	LED Pattern
Startup Mode (boot loader)	
Startup wait (5 sec) v1.0, bootloader v1	●
Startup wait (5 sec) v1.1, bootloader v2	●
Failed to load firmware	●
Boot loader mode	○
Firmware Mode	
Reset mode	○
Docked mode (pre-charging – very low battery)	●●
Docked mode (bulk charging – low battery)	●●(fast)
Docked mode (trickle charging – 80-100% charge)	●●(slow)
Docked mode (full charge)	●
Docked mode (battery error)	●●
Docked mode (wait)	●
Docked mode (error)	●●●
Reset mode	○
Error mode: default	●●●
Error mode: configuration	●●●●
Error mode: system	●●●●●
Error mode: data buffer	●●●●●●
Error mode: SD buffer	●●●●●●●
Error mode: SD I/O	●●●●●●●●
Card is full	●●
Run mode (transition)	●
Run mode (battery level indication off)	●
Run mode (battery level 4, full)	●●●●
Run mode (battery level 3)	●●●
Run mode (battery level 2)	●●
Run mode (battery level 1, low)	●
Run mode (battery very low)	●●●
Powering off	●
Wireless Streaming Debug LED Modes	
Normal	●
CPU limited	●●
Sync bad	●●
CPU limited, Sync bad	●●
Missed sync > 0	●
Missed sync > 0, CPU limited	●●
Missed sync > 0, Sync bad	●●
Missed sync > 0, CPU limited, Sync bad	●●

18 Access Point Reference

18.1 Drivers

Drivers are provided as part of the library distribution and TK Motion Manager. Instructions for installing drivers are provide in the “Hardware Driver Installation” section of this document.

18.2 Firmware Updates

Updating the movement monitor firmware should be done using the TK Motion Manager software.

18.3 Mounting and Placement

The antennas of the access point are located directly behind the black plastic face of the access point. The access point(s) should be aimed such that this face is in the approximate direction of the area where the movement monitors will be used.

18.4 Single vs. Dual

Access Point Mode With the wide range of wireless environments it is not always possible to provide a reliable channel of communication between any two nodes. Using two access points per set of up to six movement monitors is one method of improving reliability by utilizing spacial diversity. In this mode a movement monitor can hop between access points depending on which one has a better signal path. For large spaces or with spaces that have obstacles that may block wireless signals this mode of operation is recommended. Configuration of a system in this mode is transparent to the user and is automatically selected when there is enough access points available for the given number of movement monitors. Using multiple access points requires them to all have a synchronization cable connected between them.

18.5 LED Reference

Access points contain a RGB LED capable of outputting a wide array of colors to the user to indicate its current state. The following colors are used: white (○), red (●), yellow (●), green (●), cyan (●), blue (●), magenta (●), and led off (—). All LED patterns are output on a repeating cycle which may vary in period depending on the pattern. In all cases the last color listed will stay constant until the pattern repeats. For example “●—●—” will blink yellow twice and then stay off until the pattern repeats.

State	LED Pattern
Access point is powered on and is not receiving data from any monitors	●
Access point is receiving data from all monitors and there is no excessive latency for any of the monitors	● _
Access point is receiving data from all monitors but there is excessive latency (>3s) in one or more monitors. The latency is, however, decreasing (improving). This usually indicates that one or more monitors was temporarily obstructed and is now catching up.	● ●
Access point is receiving data from all monitors but there is excessive latency (>3s) in one or more monitors which is increasing (getting worse). This usually indicates that one or more monitors is obstructed and is having trouble transmitting its data.	● ●
Access point is receiving data from one or more, but not all, of the movement monitors	● _
Access point is receiving data from one or more monitors that it is not expecting to receive data (e.g. there is a monitor configured on another computer system streaming data)	● ● or ● ●
Access point is in low power USB suspend mode.	●
Access point firmware error type 3, contact support	● ● ● _
Access point firmware error type 4, contact support	● ● ● ● _
Access point firmware error type 5, contact support	● ● ● ● ● _

19 Docking Station Reference

19.1 Drivers

Drivers are provided as part of the library distribution and TK Motion Manager. Instructions for installing drivers are provide in the “Hardware Driver Installation” section of this document.

19.2 Power

- If running a single docking station, it can be powered from:
 - a USB cable plugged into a dedicated USB port on your computer
 - a USB cable plugged into a powered USB hub
 - a USB cable plugged into a wall adapter (charging only)
 - the external AC adapter (charging only)
- If running a chain of 2 or more docking stations:
 - For data transfer, both USB and external AC power are required. If a power-related error occurs, then the docking station will blink yellow until external or power is plugged in.
 - if only charging is required, the external AC power must be used

19.3 LED Reference

Docking stations contain a RGB LED capable of outputting a wide array of colors to the user to indicate its current state. The following colors are used: white (○), red (●), yellow (●), green (●), cyan (●), blue (●), magenta (●), and led off (—). All LED patterns are output on a repeating cycle which may vary in period depending on the pattern. In all cases the last color listed will stay constant until the pattern repeats. For example “●—●—” will blink yellow twice and then stay off until the pattern repeats.

State	LED Pattern
OK	
Powered off, USB suspended, or bootloader pause	
OK, but USB not enumerated	
Power problem. Need to plug in external power or USB power.	_
Docking in progress	_
Docked, but SD unavailable to host	
SD Card mounting in progress	_
SD Card mounted and available to host	
SD card read-access in progress	_
USB error	
Error	_
Error: SD card mounting error	_
Error: in-dock USB hub problem	_
Firmware error type 4, contact support	_
Firmware error type 5, contact support	_
Firmware error type 6, contact support	_
Bootloader mode	
Updating firmware	
Hardware Error - DA	_
Hardware Error - GA	_
Hardware Error - PA	_
Hardware Error - UA	_

20 Limited Warranty

This Limited Warranty applies to the I2M equipment and does not apply to related software. All software is covered by the End-User License Agreement. I2Mequipment is covered by the one-year parts & labor warranty which is void should the customer open the equipment without written authorization or due to misuse.

1. **Warranty of Title.** NEXGEN ERGONOMICS Inc. ("NEXGEN ERGONOMICS") warrants solely to the original purchaser (Customer) that (a) NEXGEN ERGONOMICS has good title to the Equipment and that, upon Customer's payment of the purchase price to NEXGEN ERGONOMICS, good title to the Equipment will be transferred to Customer.
2. **Limited Warranty of Condition and Operation.** NEXGEN ERGONOMICS warrants solely to Customer that when delivered to purchaser and for a period of one (1) year after the date of delivery to Customer, the Equipment, will conform in all materials respects to NEXGEN ERGONOMICS's published specifications when used as described in NEXGEN ERGONOMICS's written instructions, be in good working order and free of defects in workmanship and materials. EXCEPT AS OTHERWISE PROVIDED HEREIN, NEXGEN ERGONOMICS MAKES NO WARRANTY, EXPRESS OR IMPLIED, AS TO ANY MATTER WHATSOEVER, INCLUDING WITHOUT LIMITATION ANY WARRANTY OF MERCHANTABILITY OR FITNESS FOR A PARTICULAR PURPOSE EXCEPT THOSE SET FORTH IN THE DESCRIPTION AND DIRECTIONS ON THE LABELING OF THE EQUIPMENT. UNLESS THE EQUIPMENT IS USED IN ACCORDANCE WITH THE DIRECTIONS ON THE LABELING AND THE INSTRUCTIONS ACCOMPANYING THE EQUIPMENT, THIS LIMITED WARRANTY AND ANY WARRANTIES IN SUCH DESCRIPTION SHALL BE VOID AND OF NO EFFECT.
3. **Customer's Exclusive Remedies.** If within one (1) year from the date of delivery to Customer the Equipment does not comply with the foregoing Limited Warranty of Condition and Operation, NEXGEN ERGONOMICS will at NEXGEN ERGONOMICS's option, repair, replace or refund the purchase price of the defective Equipment free of charge to the Customer. Customers requesting repair, replacement or refund are required to ship, the Equipment to NEXGEN ERGONOMICS at NEXGEN ERGONOMICS's facilities in Montreal, Canada, or at such other place as NEXGEN ERGONOMICS designates. As a condition of this warranty, Customers must call NEXGEN ERGONOMICS's Customer Service Line for instructions on and prior approval of shipment prior to returning any defective Equipment.
4. **Limitation of Liability.** NEXGEN ERGONOMICS SHALL HAVE NO LIABILITY FOR ANY CONSEQUENTIAL, INCIDENTAL, OR SPECIAL DAMAGES BY REASON OF ANY ACT OR OMISSION OR ARISING OUT OF OR IN CONNECTION WITH THE EQUIPMENT OR ITS RENTAL, DELIVERY, INSTALLATION, MAINTENANCE, OPERATION, PERFORMANCE, OR USE, INCLUDING WITHOUT LIMITATION ANY LOSS OF USE, LOST REVENUE, LOST PROFITS, OR COST ASSOCIATED WITH

DOWNTIME. THE OBLIGATIONS CONTAINED IN THIS PARAGRAPH CONTINUE BEYOND THE TERM OF THIS LIMITED WARRANTY.

5. Limitation of Liability. This Limited Warranty shall be governed by, and construed and interpreted in accordance with, the local laws of the Province of Quebec (without application of its conflicts of laws rules).

21 Troubleshooting

Q: I repeatedly get the error “Error encountered while checking firmware. Please try again.”

A: This is usually an issue with how Windows recognizes the docking stations when they are plugged in.

- One possible cause of this is insufficient power being provided to the docking stations. Make sure that chains of docking stations have external power. Also make sure that docking stations plugged into a USB hub are using a USB 2.0 High Speed hub with external power.
- Another cause is that the system incorrectly initialized the docking stations. Undock any monitors, unplug the power and USB cables from the docking station(s), and carefully follow the steps in [Section 2](#) while plugging the docking stations back in.

Q: After configuring for wireless streaming, the LEDs on my monitors are all flashing green in unison, but the LED on the access point is flashing red, indicating that it is not receiving all of the data. **A:** There are a couple of possible explanations for this:

- One of the monitors is obstructed somehow. Make sure that they are all unobstructed and have clear line of sight to the access point.
- There is a rare situation where the radios on the monitors do not start broadcasting after configuration. To recover from this situation, plug the monitors back into their docking stations, and press the “Halt” button in TKMotionManager. Unplug the monitors and wait for them to power down. Next, place them back into their docking stations and wait for them to power up. Finally, unplug them from their docking stations (no re-configuration required) and wait for them to power up and start broadcasting. Often, this reset will enable the radios on the malfunctioning monitor.

Q: When I dock my monitor into its station, it flashes alternately red and blue.

A: This is an indication of a poor connection. Remove your monitor from the dock, wait for 5-10 seconds, and re-dock it.

Q: My monitor flashes red (and possibly yellow), and docking/undocking it does not fix the problem

A: If you have any data saved on the monitor from using it in logging mode, first attempt to back up the data using from you operating system’s file explorer or TK Motion Manager’s Import Manager. Next, from the Configuration dialog, select the monitor in the “Select Monitor” combo box and click on the “Re-flash Default Firmware” button. This will reset the monitor to its original state.

Q: My Windows XP/32 computer blue screens when I plug in APDM hardware.

A: This is due to a known bug in the XP/32 USB subsystem, and can be worked around by installing the ‘apdm_usb_serial_number.reg’ registry modification in the windows drivers directory used during driver installation.

NexGen is pleased to assist you with any questions you may have about our software or about the use of the technology for your application.

Please contact us at:

email: techsupport@nexgenergo.com

telephone: 514-685-8593